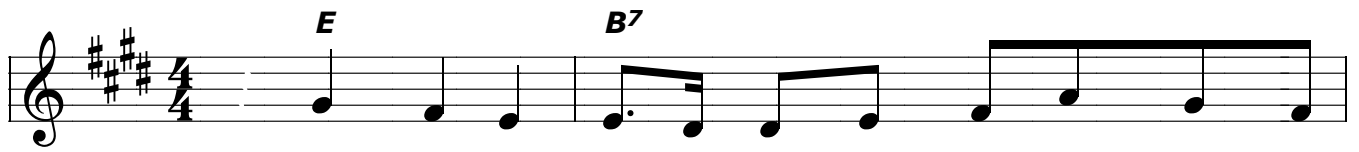
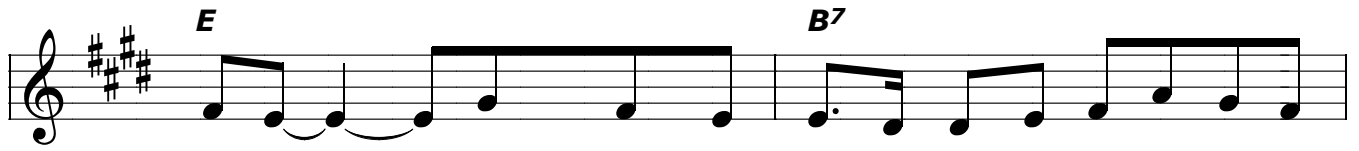


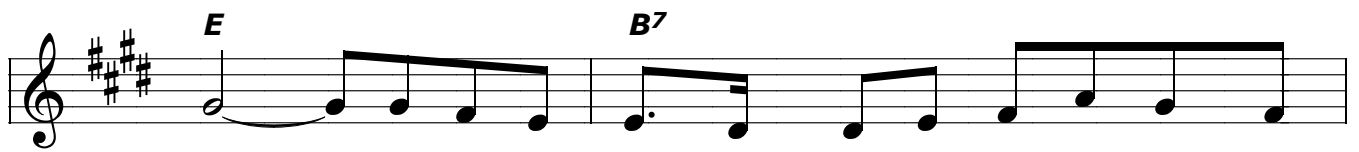
# Esperança



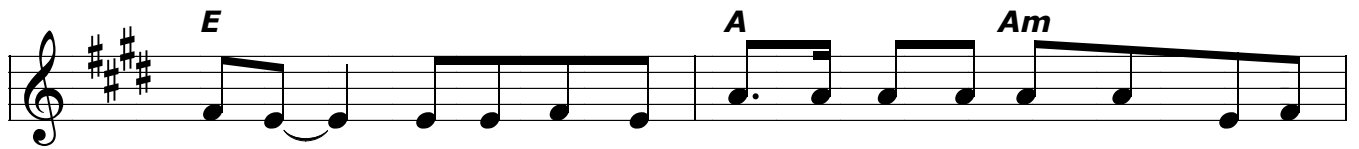
Estr.: A - ma - du - re - ce\_a ca - da ins - tan - te\_u - ma es - pe -



ran - ça de\_um mun - do no - vo po - vo - a - do de ir -



mãos. Se vo - cê po - de\_a - cre - di - tar, co - me - ce\_a -



go - ra, e não te - nha me - do de ser li - vre\_a - té o



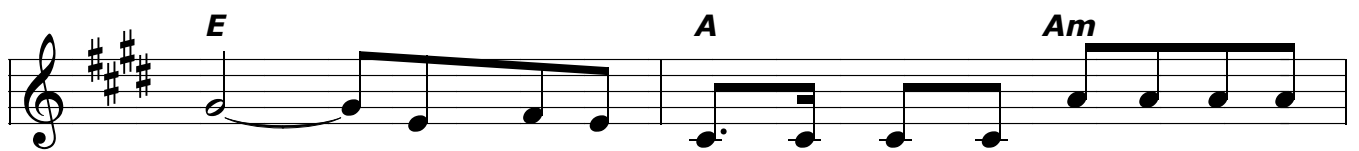
fim, não te - nha me - do de ser li - vre\_a - té o



fim. 1.Lo - bo\_e cor - dei - ro pas - ta - rão na mes - ma



rel - va, e\_em vez de ar - mas nu - cle - a - res in - fer -



nais cons - tru - i - re - mos ca - sas, ru - as e es -



co - las, ca - mi - nhos no - vos pra\_i - gual - da - de\_u - ni - ver - sal.